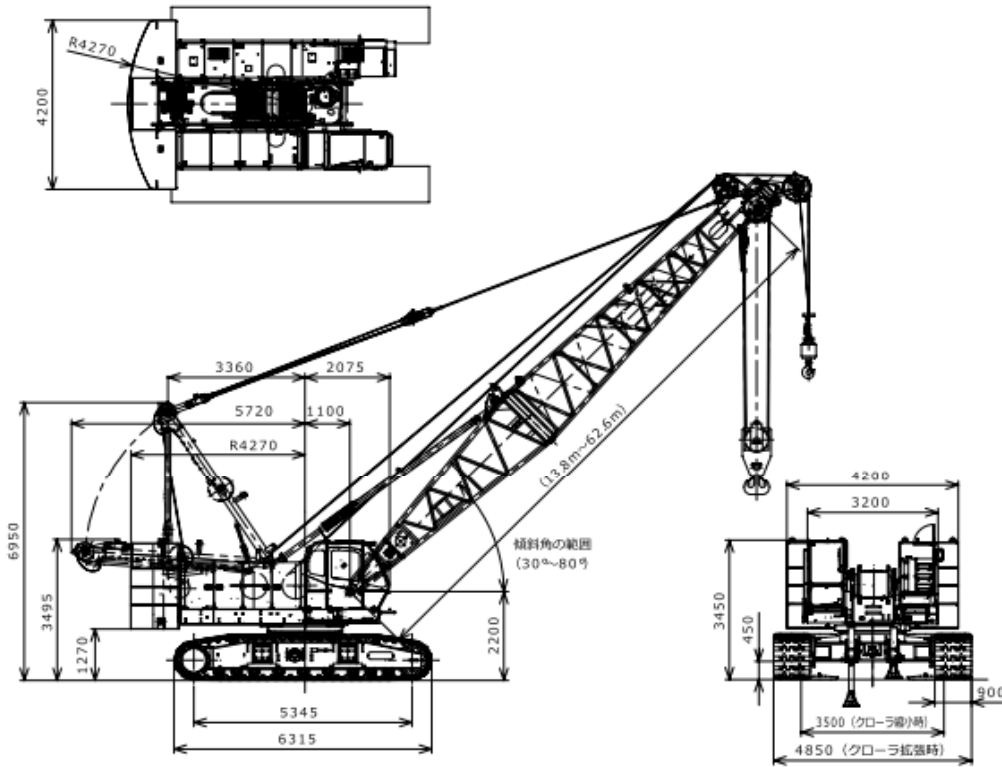


全体図(単位: mm)

縮尺: 約 1/130



主ブーム定格総荷重表

(単位:t)

ブーム長さ 作業半径(m)	13.8	16.9	19.9	23.0	26.0	29.1	32.1	35.2	38.2	41.2	44.3	47.3	50.4	53.4	56.5	59.5	62.6	ブーム長さ 作業半径(m)		
4.3	96.0(4.3m)	87.5(4.3m)	74.1(4.8m)															4.3		
5.0	70.9	70.8	70.7	64.9(5.4m)	56.4(5.3m)													5.0		
6.0	55.1	55.0	55.0	54.9	54.8	50.2(6.4m)												6.0		
7.0	44.4	44.3	44.1	44.1	44.0	44.0	43.9	39.6(7.5m)										7.0		
8.0	36.6	36.5	36.3	36.2	36.1	36.1	36.0	35.9	35.7	32.5(8.5m)								8.0		
9.0	31.0	30.9	30.7	30.7	30.5	30.5	30.4	30.3	30.2	30.2	29.7(9.1m)	27.2(9.6m)						9.0		
10.0	26.9	26.7	26.6	26.5	26.4	26.3	26.3	26.1	26.0	26.0	25.8	25.7	23.0(10.1m)	22.0(10.7m)	21.6(11.2m)	20.1(11.7m)		10.0		
12.0	21.1	21.0	20.8	20.7	20.6	20.5	20.4	20.3	20.2	20.1	20.0	19.8	19.8	19.7	19.5	19.4	18.0(12.2m)	12.0		
14.0	17.7(13.2m)	17.1	16.9	16.9	16.7	16.6	16.6	16.4	16.3	16.2	16.1	16.0	15.9	15.8	15.6	15.5	15.4	14.0		
16.0		14.6(15.8m)	14.2	14.1	14.0	13.9	13.8	13.7	13.5	13.5	13.3	13.2	13.2	13.0	12.9	12.7	12.6	16.0		
18.0			12.2	12.1	11.9	11.9	11.8	11.6	11.5	11.4	11.2	11.1	11.1	10.9	10.8	10.7	10.5	18.0		
20.0			11.8(18.5m)	10.5	10.4	10.3	10.2	10.0	9.9	9.8	9.6	9.5	9.5	9.3	9.2	9.1	8.9	20.0		
22.0				9.8(21.3m)	9.1	9.0	8.9	8.7	8.6	8.5	8.4	8.2	8.2	8.0	7.9	7.8	7.6	22.0		
24.0					8.2(23.8m)	8.0	7.9	7.7	7.6	7.5	7.3	7.2	7.1	7.0	6.9	6.7	6.6	24.0		
26.0						7.2	7.0	6.8	6.7	6.6	6.5	6.3	6.3	6.1	6.0	5.8	5.7	26.0		
28.0							7.0(26.4m)	6.3	6.1	6.0	5.9	5.7	5.6	5.5	5.4	5.2	5.1	28.0		
30.0								6.0(29.0m)	5.5	5.4	5.3	5.1	5.0	4.9	4.7	4.6	4.5	30.0		
32.0									5.1(31.7m)	4.8	4.8	4.6	4.4	4.4	4.2	4.1	3.9	3.8	32.0	
34.0										4.4	4.3	4.1	4.0	3.9	3.7	3.6	3.4	3.4	34.0	
36.0											4.3(34.3m)	3.9	3.7	3.5	3.3	3.2	3.0	2.7	36.0	
38.0												3.7(37.0m)	3.3	3.2	3.1	2.9	2.7	2.5	2.3	38.0
40.0													3.1(39.6m)	2.9	2.8	2.5	2.3	2.1	1.9	40.0
42.0														2.5	2.4	2.2	2.0	1.8	1.5	42.0
44.0															2.1(42.2m)	2.1	1.8	1.7	1.5	44.0
46.0																2.0(44.9m)	1.6			46.0

*表中の太線で囲まれた部分は、ブーム等の強度によって定められた値です。