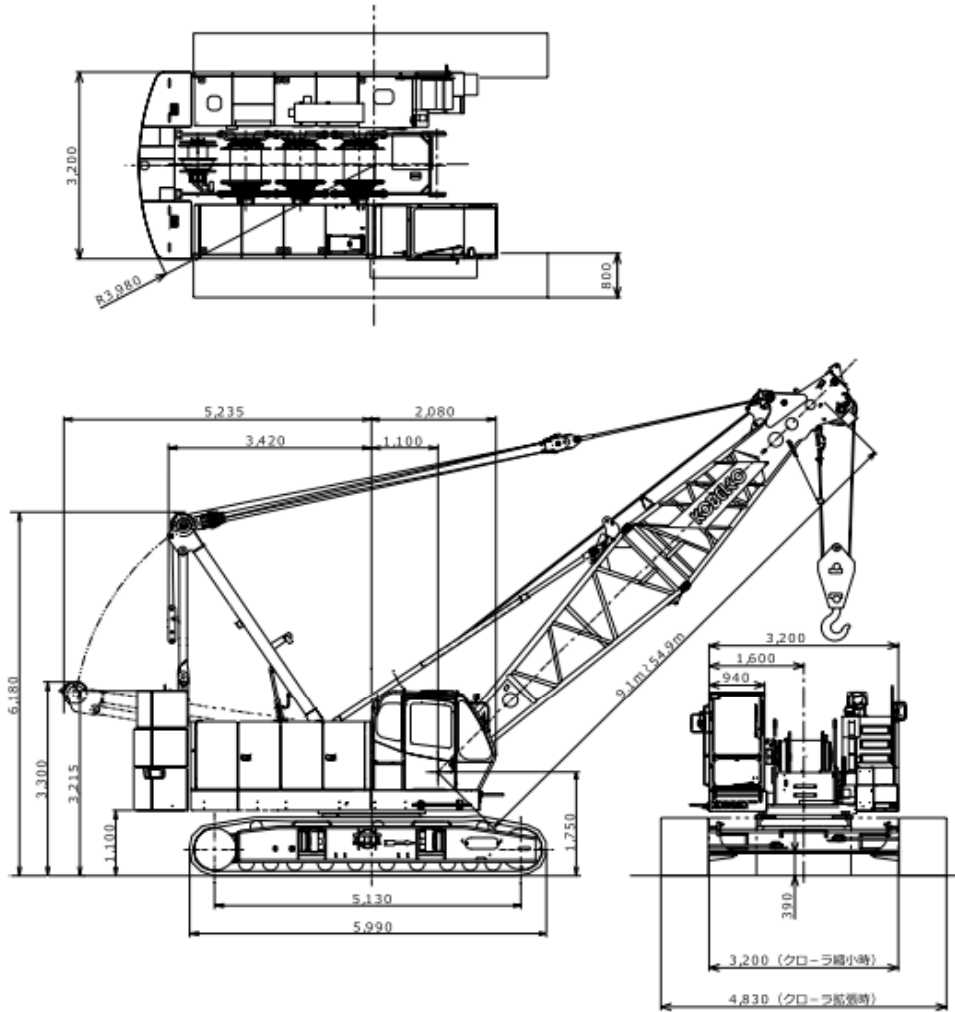


# 7070-1F

▶全体図(単位: mm)

縮尺: 約 1/100



▶主ブーム定格総荷重表

(単位: t)

ブーム長さ 作業半径 [m]	9.1	12.2	15.2	18.3	21.3	24.4	27.4	30.5	33.5	36.6	39.6	42.7	45.7	48.8	51.8	54.9
3.2	70.0/32m	70.0/36m														
4.0	70.0	70.0	66.9/42m	59.9/47m												
5.0	56.7	56.6	56.4	56.4	53.9/52m	48.0/57m										
6.0	45.2	45.0	44.9	44.8	44.7	44.7	41.7/63m	35.0/68m								
7.0	35.8	35.7	35.5	35.4	35.3	35.3	35.2	35.0	32.7/73m	28.0/79m						
8.0	29.6	29.4	29.3	29.2	29.1	29.0	29.0	28.9	28.8	28.0	26.8/84m					
9.0	23.1	25.0	24.9	24.8	24.7	24.6	24.5	24.4	24.3	24.3	24.2	21.0	21.0/95m			
10.0	21.8/92m	21.6	21.6	21.5	21.3	21.3	21.2	21.1	21.0	21.0	20.8	20.8	20.7	19.4	17.3/105m	14.0/110m
12.0		17.3/118m	16.9	16.8	16.7	16.6	16.5	16.4	16.3	16.2	16.1	16.1	16.0	15.8	15.8	14.0
14.0			13.8	13.7	13.6	13.5	13.4	13.3	13.2	13.1	13.0	12.9	12.8	12.6	12.5	12.3
16.0			13.2/145m	11.5	11.3	11.2	11.2	11.0	10.9	10.8	10.7	10.7	10.6	10.4	10.4	10.1
18.0				10.6/171m	9.7	9.6	9.5	9.3	9.2	9.2	9.0	9.0	8.9	8.8	8.7	8.5
20.0					8.5/198m	8.4	8.2	8.1	7.9	7.9	7.8	7.7	7.6	7.5	7.3	7.1
22.0						7.4	7.2	7.1	6.9	6.9	6.7	6.7	6.5	6.4	6.3	6.2
24.0						7.2/224m	6.4	6.2	6.1	6.0	5.9	5.8	5.7	5.5	5.4	5.3
26.0							6.0/250m	5.5	5.4	5.3	5.2	5.1	5.0	4.8	4.7	4.6
28.0								5.0/277m	4.7	4.7	4.6	4.5	4.4	4.2	4.1	4.0
30.0									4.3	4.2	4.1	4.0	3.8	3.7	3.6	3.5
32.0									4.2/303m	3.7	3.6	3.5	3.4	3.2	3.1	3.0
34.0										3.5/329m	3.2	3.1	3.0	2.8	2.6	2.5
36.0											3.0/356m	2.8	2.6	2.4	2.3	2.2
38.0												2.5	2.3	2.1	1.9	1.8
40.0													2.0	1.8	1.6	1.5
42.0													1.9/409m	1.5	1.3	1.2
44.0														1.3/435m	1.2	1.1
ロープ巻数	10	10	10	9	8	7	6	5	5	4	4	3	3	3	3	2

※表中の太線で囲まれた部分は、ブーム等の強度によって定められた値です。