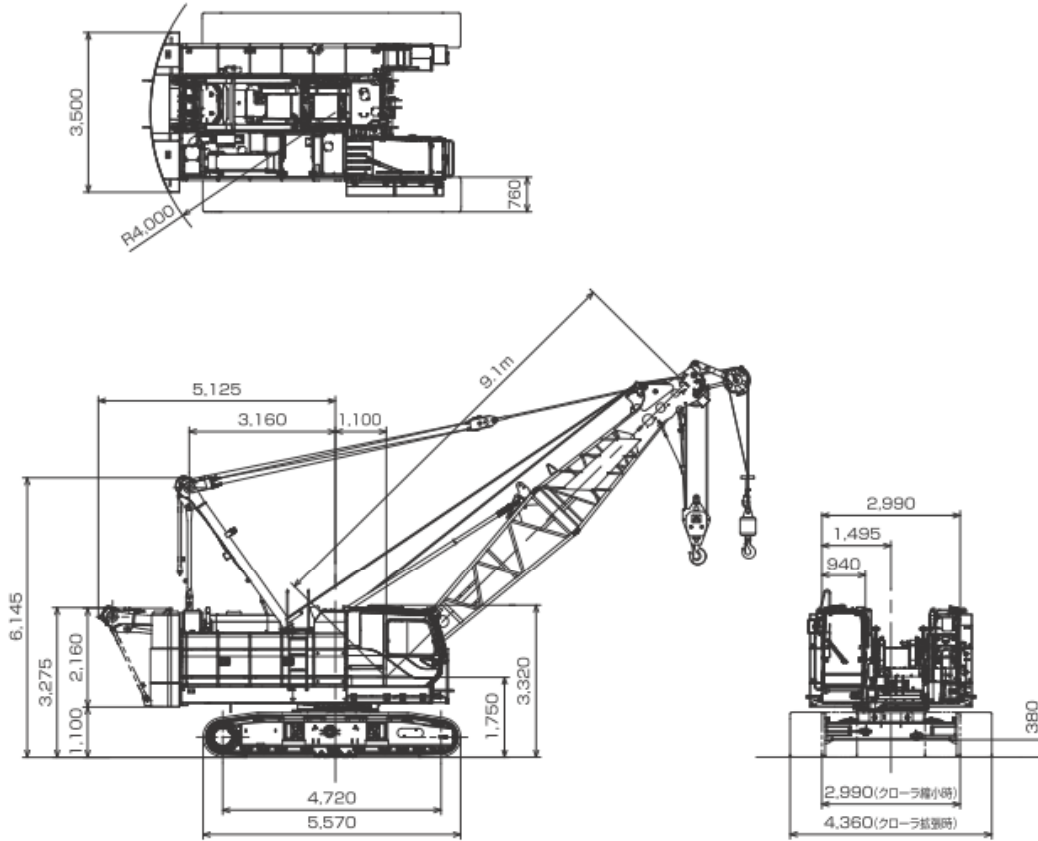


7050G

▶全体図(単位: mm)



▶主ブーム定格総荷重表

(単位: t)

ブーム長さ 作業半径(m)	9.1	12.2	15.2	18.3	21.3	24.4	27.4	30.5	33.5	36.6	39.6	42.7	45.7	48.8	51.8	ブーム長さ 作業半径(m)
3.0	50.0															3.0
3.5	50.0/3.8m	50.0/3.8m														3.5
4.0	47.6	47.6	45.3/4.1m													4.0
4.5	38.6	38.5	38.5	36.6/4.7m												4.5
5.0	32.4	32.3	32.2	32.2	30.1/5.2m											5.0
5.5	27.8	27.8	27.7	27.7	27.6	26.0/5.7m										5.5
6.0	24.4	24.3	24.2	24.2	24.1	24.1	22.8/6.2m	19.8/6.8m								6.0
7.0	19.5	19.4	19.3	19.3	19.2	19.2	19.1	19.0	17.8/7.3m	16.1/7.8m						7.0
8.0	16.2	16.1	16.0	15.9	15.8	15.8	15.7	15.7	15.6	15.5	14.4/8.4m	13.2/8.9m				8.0
9.0	13.8	13.7	13.6	13.5	13.4	13.4	13.3	13.3	13.2	13.1	13.0	13.0	12.0/9.4m	10.5/9.9m		9.0
10.0	13.6/9.1m	11.9	11.8	11.7	11.6	11.6	11.5	11.4	11.4	11.3	11.2	11.2	11.1	10.5	9.2/10.5m	10.0
12.0		9.5/11.8m	9.2	9.1	9.0	9.0	8.9	8.9	8.8	8.7	8.6	8.6	8.5	8.4	8.3	12.0
14.0			7.5	7.4	7.3	7.3	7.2	7.1	7.0	7.0	6.8	6.8	6.7	6.6	6.5	14.0
16.0			7.2/14.4m	6.2	6.1	6.0	6.0	5.9	5.8	5.7	5.6	5.6	5.5	5.4	5.3	16.0
18.0				5.7/17.1m	5.2	5.1	5.0	4.9	4.9	4.8	4.7	4.6	4.5	4.4	4.3	18.0
20.0					4.6/19.7m	4.4	4.3	4.2	4.1	4.0	3.9	3.9	3.8	3.7	3.6	20.0
22.0						3.8	3.7	3.6	3.6	3.5	3.3	3.3	3.2	3.1	3.0	22.0
24.0							3.8/22.3m	3.3	3.2	3.1	3.0	2.9	2.8	2.7	2.6	24.0
26.0								3.1/25.0m	2.8	2.7	2.6	2.5	2.4	2.3	2.2	26.0
28.0									2.5/27.6m	2.4	2.3	2.1	2.1	2.0	1.9	28.0
30.0										2.1	2.0	1.9	1.8	1.7	1.5	30.0
32.0										2.0/30.3m	1.7	1.6	1.5	1.4	1.2	32.0
34.0											1.7/32.9m	1.3	1.3	1.1	1.0	34.0
36.0												1.0/35.6m	1.0			36.0

※表中の太線で囲まれた部分は、ブーム等の強度によって定められた値です。